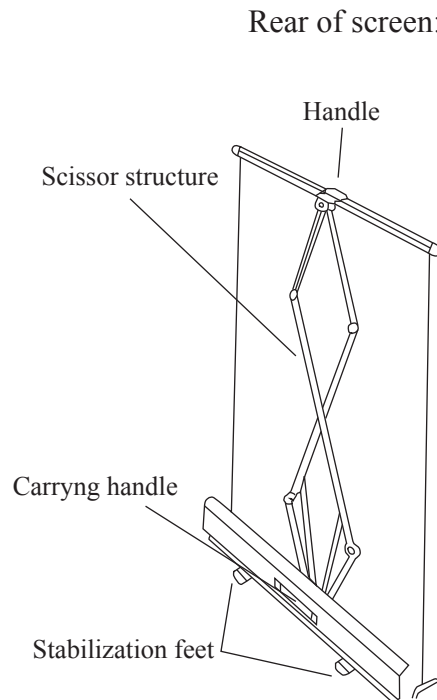
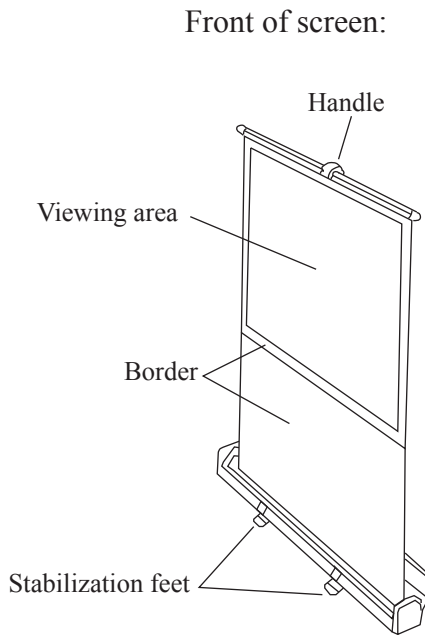


# User Guide

## Portable Floor Standing Projection screen

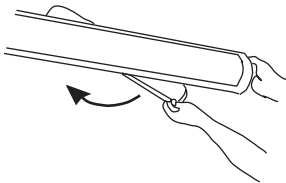
*Thank you for purchasing the Portable Floor Standing Projection Screen. This screen is ideal for classrooms, business presentations, or for a portable home theater.*

### 1.) Screen Components



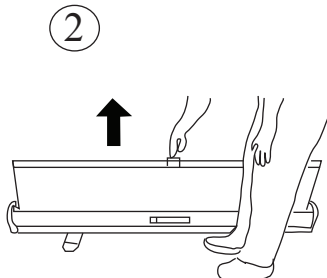
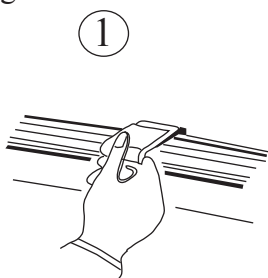
### 2.) Operating the screen

Rotate the stabilizing feet out from under the carrying case.

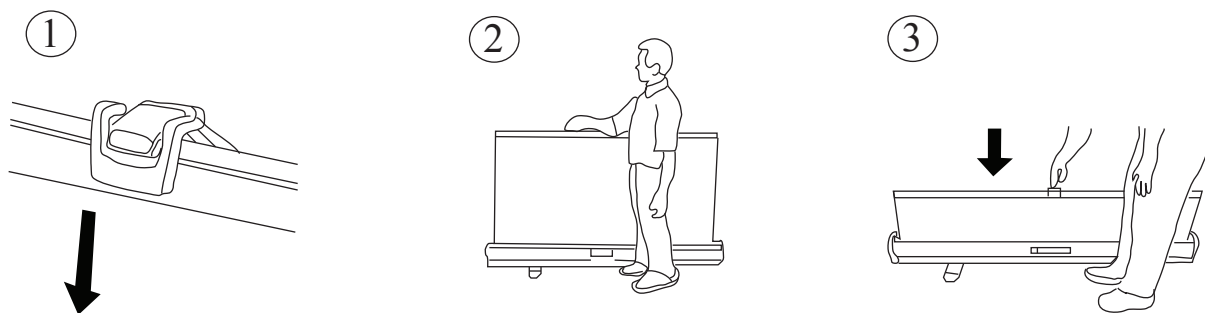


Unlock the clasps on the carrying case, and open the case.

Grasping the handle of the screen, pull up gently until the screen reaches the desired height.



To lower the screen, grasp the top handle and gently push down. Guide the screen back into the case with your hand to prevent it from retracting too quickly.



After closing, secure both clasps on the screen's casing and tuck the stabilizing feet under the case.



### **3.) Safety and maintenance instructions**

Do not use this screen near any source of excessive heat, such as a stove, fireplace, or space heater.

Please keep this screen away from children.

To help keep the screen's surface clean, avoid touching it with your fingers, and please store in case after use.